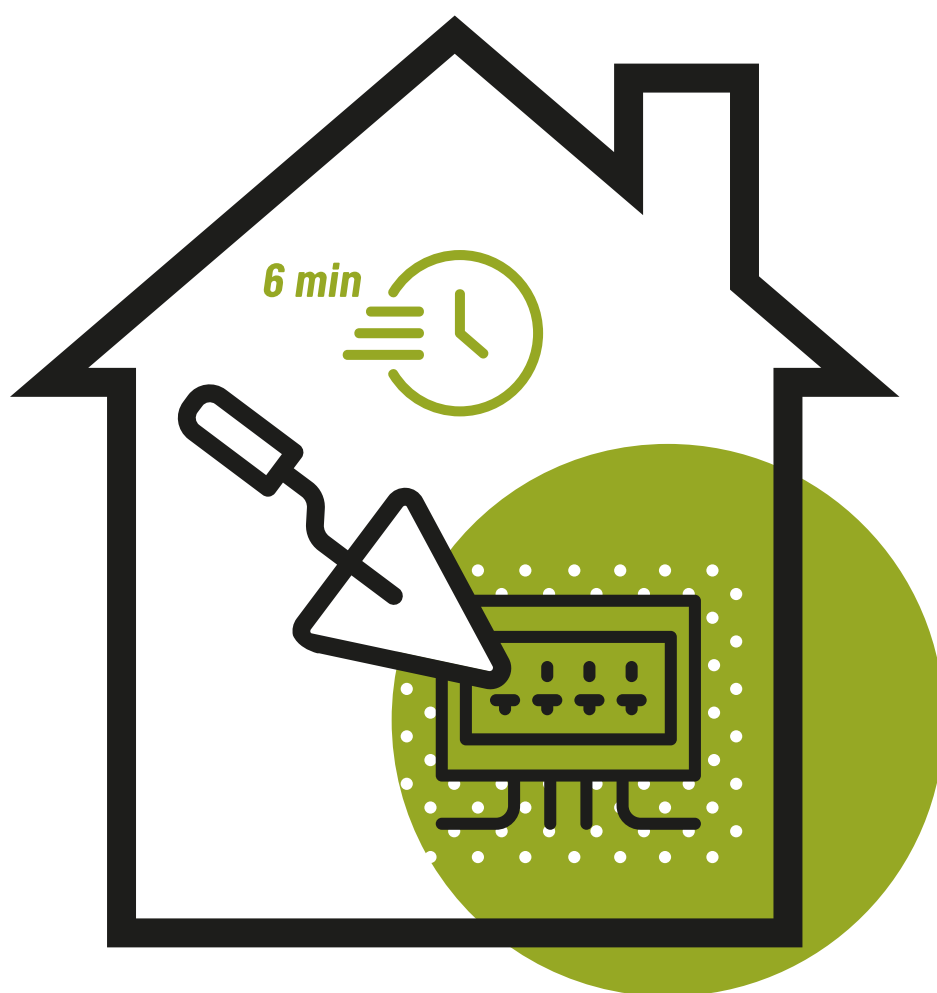


gesso *da muro*

Quick-setting
gypsum based
jointing compound



GYPSUM-BASED



Gesso da muro

Quick-setting gypsum based jointing compound



TECHNICAL FEATURES

Category A1/A2/A3



Theoretical yield	~ 12 Kg/m ² for 1 cm thick
Apparent specific weight	~ 1000 Kg/m ³ (free-fall)
Mixing water	72÷75%
Start taking	~ 5 min.
Resistance to fire	A1 class

Laboratory tests performed at + 20°C and R.H. 65%, data subject to variations in different atmospheric and installation conditions.



METHOD OF USE

The product is for generic applications and is used for: execution of rapid fixings, execution of temporary fixings for installation of ornamental components (marble parts for stairs, architraves, colonnades, etc.), fixing of wiring conduits in wall chases, fixing of door and window subframes, creation of insulated structures for fireplaces, creation of vaulted ceilings with lightweight composites for monumental restoration works. Gypsum finishing plaster is not subject to shrinkage once fully cured and hardened.

Maximum rapidity of curing.



WARNINGS

Do not add additives or aggregates of any kind.
Do not apply on inconsistent, dusty or degraded, frozen or wet substrates.
Do not apply at temperatures below + 5 ° C or above + 35 ° C.
Do not apply in conditions of intense sun, high wind or possible rain.
Keep the product in the bags intact, on pallets and in a dry and ventilated place.



PACKAGING

Paper bags of Kg 20.

*The above information is to be considered indicative, non-binding and subject to change without notice.
Therefore the suitability of the product for the desired result must be verified by the user, who is fully responsible for its use.*